



**THALAMI**  
CIVILS

## 2018 PORTFOLIO



**THALAMI**  
CIVILS PTY LTD



**THALAMI**  
CIVILS

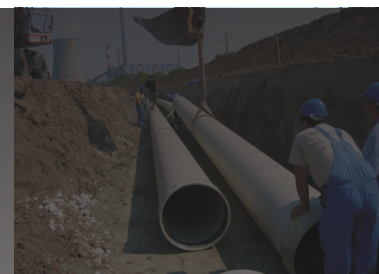
# Index

**Background**

**Objectives & Values**

**Current & Completed Jobs**

**Our Contact Details**





**THALAMI**  
CIVILS

## Home

### About us

#### BACKGROUND

Thalami Civil Pty Ltd was established by **Mr Luthando Jojwana**, a dynamic and innovative Previously Disadvantaged Individual who is committed to high standards and promotes professionalism in providing a service to the companies Clients.

The Company specializes in Civil Engineering and General Building Construction and Project Management Services.

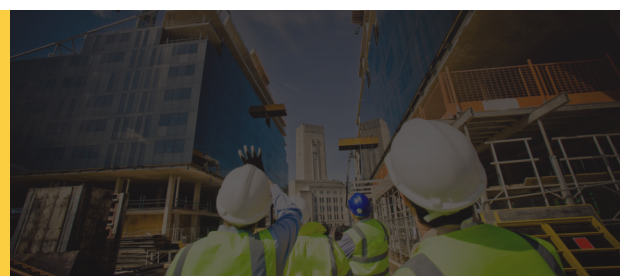
The company comprises of qualified previously disadvantaged personnel, who have worked under established construction firms and the public sector on major projects for many years and they provide high level of professionalism, quality services. Thalami Civils Pty Ltd is 100% black own business enterprise with a young leadership. Currently the company has employed about 45 permanent employees and from time to time + 500 general labourers are employed by the company.

#### AREAS OF SPECIALITY IN CONSTRUCTION

- General Building (Public Infrastructure), Urban infrastructure and township , Rural infrastructure, Community Based Projects, Water and Sanitation networks, Roads and stormwater, Water and Sewer Treatment Works, Building Works, Sports and recreation facilities , Social Facilitation and Plant hire.

#### MISSION STATEMENT

**Thalami Civils Pty Ltd** is committed to support initiatives and interventions that seek to redress social and economic imbalances and establish a truly empowering and developmental socio-economic capability across the entire communities by:





**THALAMI**  
CIVILS

## OBJECTIVES

**Thalami Civils Pty Ltd** was established with the following objectives:

- Vigorously strive against unemployment while the providing accredited training to local labour force and contribute to local economic development.
- Willingly provide an enabling environment to develop and encourage individuals possessing the necessary motivation and aspiration to enhance their skills.
- Exclusively build a reputation for technical excellence and innovations, quality of service and reliability to both our clients and recipients of our service.
- Rendering high quality and professional services.
- Building community structures to manage their own affairs and infrastructure in a sustainable manner.
- Developing human resources through in-house training programmes.
- Encourage community participation in the planning process of development projects.
- Encouraging labour intensive methods of construction where technically and economically viable.
- To promote Black empowerment at all times.
- To provide our client with a professional and quality product on time at a reasonable cost by utilizing our skills, expertise and effective combination of all our resources.

## Our Values

**Innovation:** Our employees are encouraged to bring new ways of doing our things. Pursuing new creative ideas that have the potential to change and improve the lives of our communities.

**Integrity:** We promise to conduct our business with honesty, reliability and truth

**Professionalism:** Our promise is to conduct our businesses and treat our clients with high respect and provide highest expertise and professionalism

**Accountability:** Thalami Civils and its employees promise to take responsibility in every task it has to perform.

**Promise:** We promise to provide good quality services and meet our client's expectations.

**Safety** – Our priority is to ensure that all clients and communities are safe and we provide an accident-free workplace for all employees. We comply with all safety requirements.







**THALAMI**  
CIVILS

## Our Projects

Luthuthu Maqabo Water- Engcobo

CIDB Grading =7CE (17 Million)

Church Square Rejuvenation Pretoria

CIDB Grading =7GB (28 Million)

Guvebu-Sawutana Access road -Butterworth

CIDB Grading =5CE (4.5 Million)

Johannesburg Water- Pressure Management

CIDB Grading =4CE (2.6million)

Libode Landfill Site

CIDB Grading =6CE (10.8 million)

Reinfontein to Eenzam access road

CIDB Grading =7CE (23 million)

Mavuso 300 housing Projects

CIDB Grading =7GB (43 million)

Teko kona sports field

CIDB Grading =5CE (5.4 million)

Asidi Cluster B3:(Imvula Trust) Water and sanitation facilities

CIDB Grading =6GB (9.6 Million)

Asidi Cluster E3:(Imvula Trust) Water and sanitation facilities

CIDB Grading =6GB (9.4 million)

Centane Taxi Rank

CIDB Grading =6CE (6.4 million)

Rainbow Junction

CIDB Grading =5GB (5.4 million)

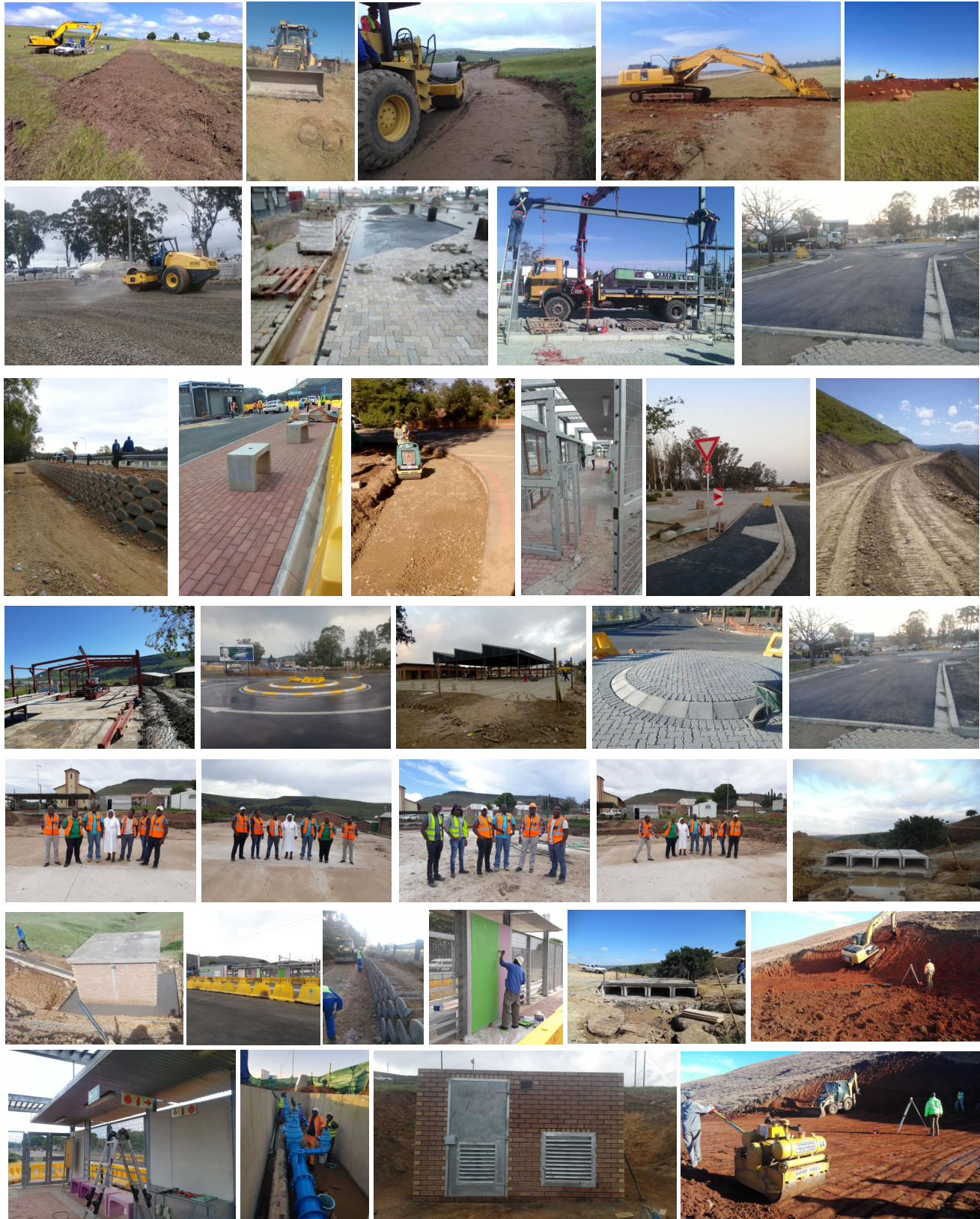
Fort hare access road

CIDB Grading =6CE (7.4 million)





**THALAMI**  
CIVILS







**THALAMI**  
CIVILS

## Our Team

Civil Engineers  
Safe Officers  
HR and Administration/ Finance  
Quantity Surveyors  
Artisans

## Our Resources/Equipment's range from :

Komatsu Excavators  
Cat 428F TLB's  
Water Tanker  
10 Tons smooth drum Roller  
Tamping Rammers  
Concrete Mixers  
Water pump  
Generators  
Plate Compactors  
Poker Vibrators  
GX 160 5.5HP Power Float



**THALAMI**  
CIVILS



### **Contact us**

Tel: 012 372 3028

Fax: 086 750 3561

Tel No: 043 722 5618

Fax No: 086 750 3561

Email Address: Admin@thalami.co.za

### **POSTAL & PHYSICAL ADDRESS**



#### **PRETORIA (Head Office)**

Plot 70 Tienie Street,  
Andeon, Zandfontein,  
Pretoria



#### **EAST LONDON (Satellite Office)**

247 Oxford Street  
Southernword  
East London  
5247

CIDB- CRS No -234756

BBBEEE Level 1-Reg No 2015/029713/07

SAFECEC Membership No-32008673

BCCEI -BC7670783352



**THALAMI**  
CIVILS



for more information

T: 012 372 3028 F: 086 750 3561 T: 043 722 5618 F: 086 750 3561 E: [Admin@thalami.co.za](mailto:Admin@thalami.co.za)